



**Fully real time - no dropped frames**

**Robust 24 / 7 operation**

**Up to 6 RGB and 6 video inputs**

**Up to 4 output screens**

**Control via PC web browser**

**Embedded operating system**

**Redundant power supplies**

**Downloadable backgrounds**

**Borders, titles and sprites**

**Rugged and compact**

**Plug and play architecture**

**Command centers**

**Control rooms**

**Communication hubs**

**Exhibitions**

**Network operations centers**

## MULTI-SCREEN CONTROLLER FOR VIDEO/DATA DISPLAY

### MediaWall 2000

#### Real Time Display Wall Processor

The MediaWall<sup>®</sup> 2000 is a fully real time video/data wall processor for arrays up to four projectors, cubes or flat panel displays. Unique among display wall processors, it is based on a custom, high performance architecture rather than a PC, with faster updates, more display flexibility, robustness and security.

The MediaWall processor can display up to six graphics and six video signals simultaneously anywhere, any size, on the screen array, within or across screens, in correct aspect ratio or stretched to fit, in whole or zoomed to emphasize details. Unlike other video/data walls, the MediaWall processor has essentially no limits on display alternatives; the multi-screen array forms a truly virtual screen in which any display of windows is possible. The system is fully real time, with no dropped frames. No competitive video/data wall even comes close.

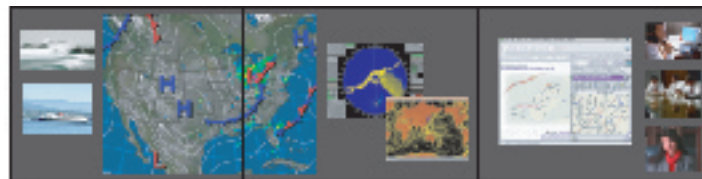
The system offers "plug and play" capability with a wide range of inputs. Graphics signals are selectable up to 1920 x 1200 pixels in RGB or DVI format. HDTV inputs are also supported, up to 1080i and 1080p. Video inputs may be composite or S-Video.

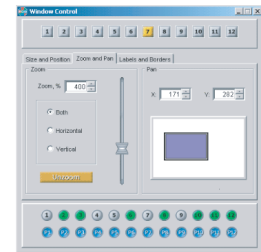
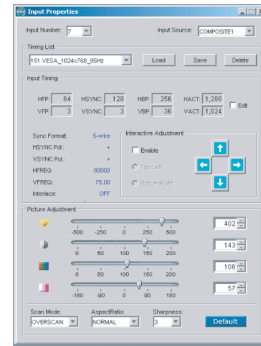
Control is via RS-232 serial or Ethernet port. A web browser based control system provides both local and remote operation. Because it is web based, control is independent of the remote computer's operating system. The user interface provides a graphical representation of the wall with "drag and drop" window positioning and scaling. The control panel screen mimics the display wall with periodic updates of the actual inputs.

The system offers 24/7 robustness. It comes packaged in a compact 2U rack mountable enclosure with replaceable air filter, redundant power supplies, and thermostatically controlled fans, providing an excellent solution for challenging environments. Most importantly, the MediaWall processor provides the security and reliability of an embedded operating system.

The MediaWall processor works with any tiled display and even provides adjustment to compensate for the borders on flat panels. Output resolution is up to 1920 x 1200 pixels per screen.

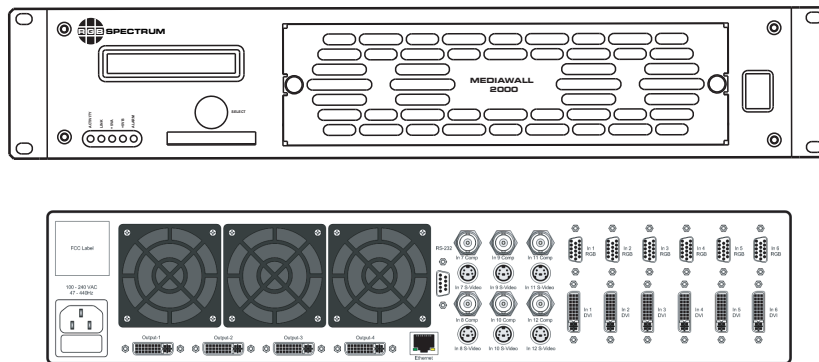
The MediaWall processor is an unbeatable processor for mission critical, real time operations. In addition, it is priced competitively with systems that cannot approach its flexibility or performance.





Control screens are accessible locally or remotely over any internet browser, independent of operating system.

The control screen mimics the actual display wall, with periodic updates of the images. The selection of real video or icons is on a per window basis. (Future option)



Front and back panels. The front panel provides an LCD status display. The MediaWall processor offers a true plug-and-play architecture, with ease of set-up similar to a matrix switcher. There is no software to install and no network dependencies, except for optional remote control.

## Specifications

Specifications subject to change without notice  
Made in the USA ©2005 RGB Spectrum



### High Resolution Graphics Inputs

---

RGB Analog	Interlaced or non-interlaced
Number / Type	6 x analog RGB / YPbPr / HDTV
Video Level	Nominal 0.7V pk - pk (1.0V composite pk - pk)
Input Impedance	75 Ohms
Sample Rate	Up to 165 MHz
Horizontal Scan Rate	12 kHz to 125 kHz
Frame Rate	Up to 100 Hz
Resolution	640 x 480 - 1920 x 1200 pixels
Sync	Sync on green, separate composite sync, or separate H-drive and V-drive.

#### DVI Digital

Number	6 x DVI single link
Connector type	DVI-I (Integrated analog / DVI 29 pin connector)
Maximum bandwidth	1.65 Gbps / channel

### Video Inputs

---

#### Analog Composite

Number	6 x composite 6 x S-Video
Video Level	Composite 1.0 V pk - pk nominal
Format	625 line PAL, 525 line NTSC
Input impedance	75 Ohms
Connector type	Composite video: BNC (female) S-Video: 4 pin mini DIN (female)

### High Resolution Outputs

---

Number / Type	4 x RGB analog / DVI digital
Resolution	640 x 480 - 1920 x 1200 pixels
Video Level	Nominal 0.7V pk - pk
Sample Rate	Up to 165 MHz
Sync	Sync on green, separate composite sync, or separate H-drive and V-drive.

#### DVI

Maximum bandwidth	1.65 Gbps / channel (DVI Single link)
-------------------	---------------------------------------

### Features

---

Labels, borders, backgrounds, sprites, pan and zoom, presets, window animation;  
mullion compensation, freeze frame, window fades, compact flash card reader

### Other

---

Power	90-264 VAC autorange 47 - 400 Hz. Less than 100W
Control	Command line using RS-232, or Ethernet 10/100 BASE-T Graphical User Interface using internal web server
Size	Width 17.25" Depth 18" Height 3.5"
Weight	25 lbs.



#### **Corporate Headquarters**

950 Marina Village Parkway  
Alameda, California 94501  
TEL: (510) 814-7000  
FAX: (510) 814-7026  
WEB: www.rgb.com  
e-mail: sales@rgb.com

#### **European Headquarters**

La Clairière, Chemin des Abeilles  
Quartier De Malouesse  
Luyes Aix en Provence 13080  
France  
TEL: (33) 442 240884  
CELL: (33) 607 247428  
e-mail: philipd@rgb.com

#### **RGB SPECTRUM®**

a visual  
communications  
company™



#### **Basics**

6 high resolution RGB/DVI/HDTV inputs  
6 video NTSC/PAL Composite/S-Video inputs  
Up to 12 inputs displayed simultaneously  
4 outputs - 2 x 2, 1 x 2, 1 x 3, 1 x 4 wall arrays  
Inputs/outputs to 1920 x 1200

***Highest Resolution Video Wall Processor Available***

#### **24/7 Operation**

Compact 2U enclosure  
Thermostatically controlled fans  
Front replaceable air filters  
Hot swappable, redundant power supplies  
Security and reliability of an embedded operating system  
No hard disk to fail or be compromised

***The Most Robust, Secure Video Wall on the Market***

#### **Real Time Performance**

No dropped frames  
Update rates up to 100 fps  
No reduction in performance as number of inputs increases  
Full resolution display for every input

***Performance Matched Only at a Much Higher Price***

#### **No Restrictions on Display Configurations**

All inputs scalable from postage size to multi-screen  
No limits on number of inputs per screen  
Images overlaid, stretched and windowed across screens

***Display Flexibility Few Can Match***

#### **Smooth Motion**

Smooth scaling of images up or down in size  
Smooth motion across screen or screens  
Smooth pan and zoom within images

***A Capability Beyond Other Systems***

#### **Simple, Sophisticated Control**

No drivers, operating system, or control programs to install  
Platform independent browser-based control software  
RS-232, Ethernet or Internet remote control  
Web browser based control mimics actual images displayed on wall

***Easiest, Most Intuitive and Flexible Control System Available***

#### **Foreground Sprites and Full Resolution Backgrounds**

Loadable on compact flash cards or over the network  
Full resolution backgrounds, for maps or presentation templates  
JPEG and TIFF support  
Foreground sprites, for logos or IDs  
Sprites of any shape or position, opaque or transparent

***Versatile Features for Displaying Static Images***

#### **Plug and Play Installation**

True plug and play processor; no software installation  
Sets up with the ease of a matrix switcher  
No dependency on network connections  
Autosync for all inputs

***Fastest, Easiest Set-Up in the Industry***

#### **More Features**

Mullion compensation, for proper registration of flat screen displays  
Pan and zoom or crop images, for display of areas of interest  
Labels and borders on any image window  
24 preset layouts instantly selectable  
Move windows instantly or smoothly over a programmed time period  
Freeze any window  
Fade windows in/out

***An Unbeatable Feature Set***

Vertrieb: CAMBOARD Electronics  
Ahornweg 17, 74080 Heilbronn

Tel. +49 (0) 71 31 / 91 12 01, Fax +49 (0) 71 31 / 91 12 03, [www.camboard.de](http://www.camboard.de)