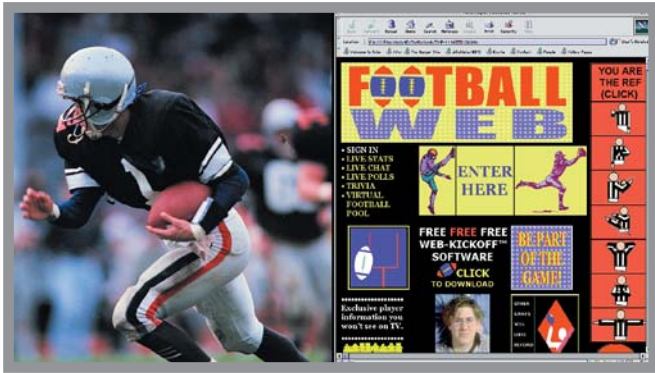


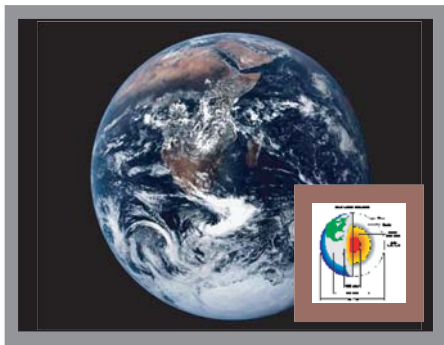
DISPLAY COMPUTER AND VIDEO... WITH SEAMLESS SWITCHING

DUALVIEW XL

Windowing Display System



side-by-side



picture-in-picture

2 Window Display

RGB, HDTV, S-Video, Composite Inputs

Optional DVI Inputs

Smoothly Resize, Position, and Zoom Inputs

Ethernet and RS-232 Control

Web Operation

4:3 and 16:9 Displays

Fades

Titles and Borders

Compact 1 RU Chassis

Genlock

RGB and DVI Output

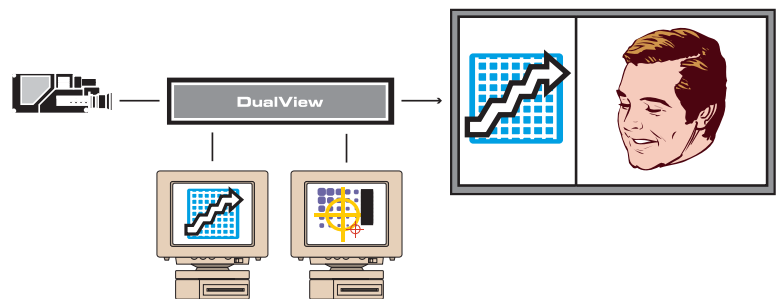
The DualView™ XL display processor is a sophisticated AV system designed for multimedia presentations, training, videoconferencing, and other applications. It eliminates the need for multiple projectors, separate video scalars, and effects generators. Switching between images offers a choice of clean cuts and fades.

The DualView XL supports a unique side-by-side display mode for viewing two computer or two video signals or a combination. The side-by-side display mode does not obscure either image, which can be presented in original aspect ratio or fit to screen. A picture-in-picture capability is also available.

Internal scalars convert video and computer signals to match the native resolution of any projector, monitor, or flat panel display. Video is processed and enhanced to bring out the highest possible image quality. With state-of-the-art de-interlacing, adaptive comb filtering, and line interpolation, the DualView XL produces a film-like image without line structure.

Stretching and cropping capabilities are provided to best fit a 4:3 or 16:9 format.

The DualView XL supports up to eight inputs, of which two can be displayed simultaneously. For convenience, dual outputs are provided in both analog and digital format.



Board Rooms

Training Facilities

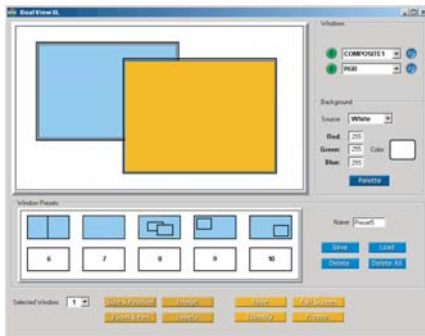
Video Conferencing

Home Theater

Staging

Meeting Rooms

Electronic Signage



DualView XL Web Interface

Operate all of the DualView XL processor's display capabilities remotely from any web browser.

Specifications

Input Signals

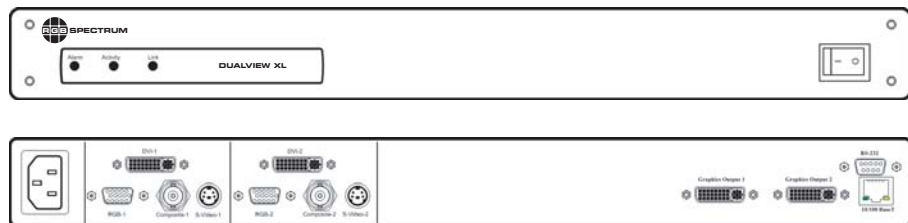
Type / Number	2 x RGB / Y P _b P _r / HDTV 2 x DVI (optional) 2 x Composite 2 x S-Video (configurable as 2 x Composite)
Resolution	640 x 480 to 1600 x 1200 @ 60 Hz 720p and 1080i HDTV
Horizontal scan rate	12 kHz to 125 kHz interlaced or non-interlaced
Frame rate	Up to 200 Hz
Video levels	0.7 V p-p
Sync type	Sync on green, separate composite sync, or separate H-Drive and V-Drive
Connectors	RGB: 15-pin HD D-Sub (female) DVI: 24-pin DVI-D (optional) Composite: BNC (female) S-Video: 4-pin mini-DIN (female)

Output Signals

Type / Number	2 x RGB analog 2 x DVI digital
Resolution	640 x 480 to 1600 x 1200 pixels @ 60 Hz
Horizontal scan rate	12 kHz to 125 kHz interlaced or non-interlaced
Frame rate	Up to 200 Hz
Video levels	0.7 V p-p
Sync type	Sync on green, separate composite sync, or separate H-Drive and V-Drive
Connectors	Analog and Digital: 29-pin DVI-I

Other

Power	90-264 VAC, auto ranging 47 Hz-400 Hz Less than 50 Watts
Control	Ethernet 10/100 BASE-T RS-232 Web interface
Size	1 RU Width 17.25" (43.8 cm) Depth 15.3" (38.9 cm) Height 1.75" (4.5 cm)
Rackmount	Rackmount kit included
Weight	Approximately 14 lbs. (6.3 kg)



Front and back panels with optional DVI input